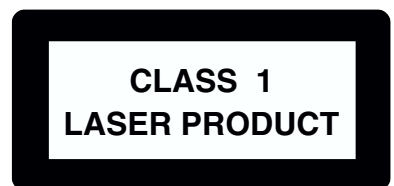


Service
Service
Service

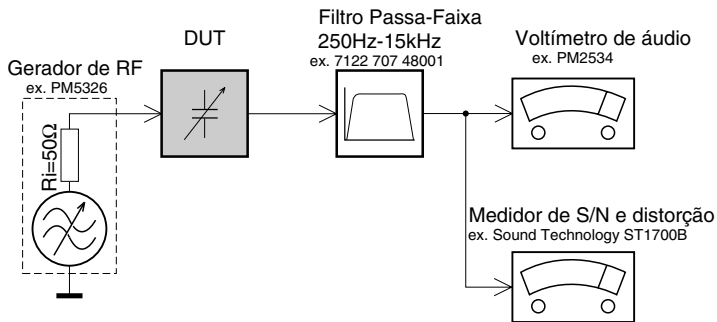
Service Manual

Conteúdo	Página
Ajustes.....	2
Manuseando comp. SMD, Instruções de Segurança e Notas.....	3
Instruções de Uso.....	4
Diagrama em Blocos e Conexões.....	5
Diagrama em Blocos e Conexões.....	6
Painel Frontal.....	6
Painel Frontal e OK.....	7
Layout Painel Frontal.....	8
Painel Frontal.....	9
Layout Painel Frontal.....	10
Painel Fonte de Alimentação.....	11
Layout Painel Index & Power.....	12
Painel Index & Power.....	13
Painel MPEG & Servo (DVP5505S).....	14
Painel SDRAM,Flash, Filtro Vídeo.....	15
Painel Filtro Áudio & Saída.....	16
Painel MPEG - Layout.....	17
Painel Index & Power, Reset (DVP5505S).....	19
Painel MPEG & Servo (DVP5505S).....	20
Painel SDRAM,Flash, Filtro Vídeo (DVP5505S).....	21
Painel Filtro Áudio & Saída (DVP5505S).....	22
Painel MPEG - Layout (DVP5505S).....	23
Painel Scart - Layout.....	25
Vista Explodida.....	26



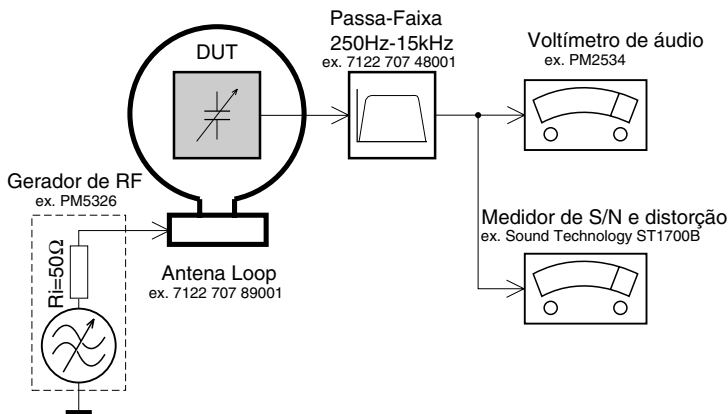
AJUSTES

Tuner FM



Use um filtro passa-faixa para eliminar ruídos (50Hz, 100Hz) e distorções do tom piloto (19kHz, 38kHz).

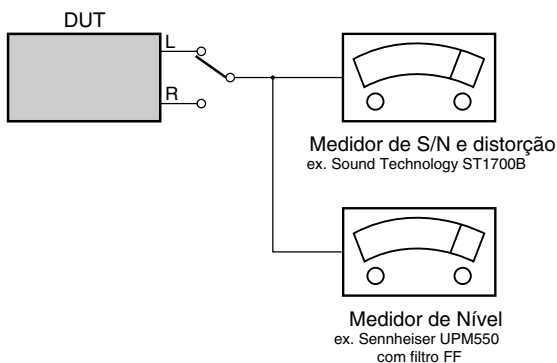
Tuner AM (MW,LW)



Para evitar interferências atmosféricas todas as medidas em AM devem ser feitas dentro de uma Gaiola de Faraday. Use um filtro passa-faixa (ou um filtro passa altas de 250Hz) para eliminar ruídos (50Hz, 100Hz).

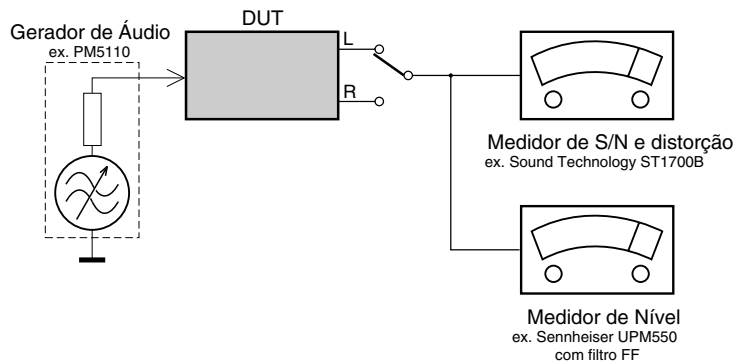
CD

Use um disco de sinal de áudio SBC429 4822 397 30184 (Substitui o disco de teste 3)

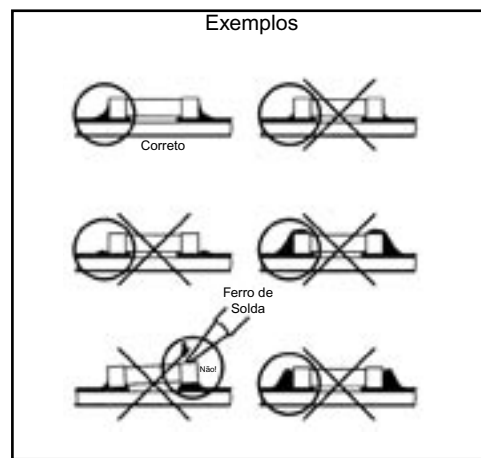
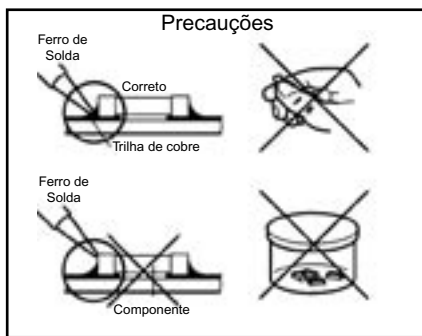
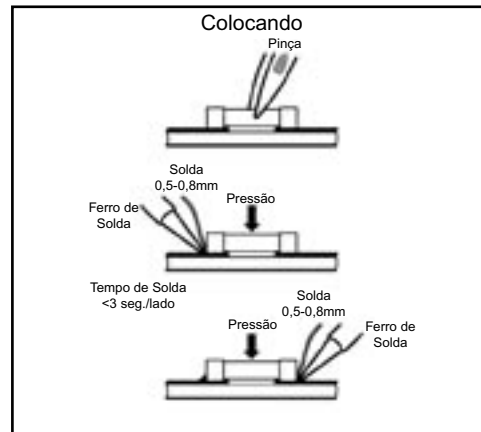
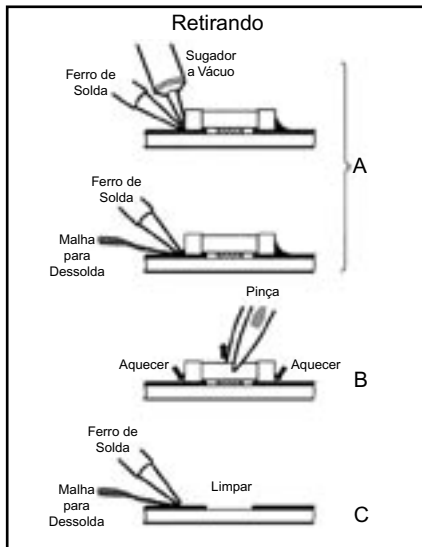
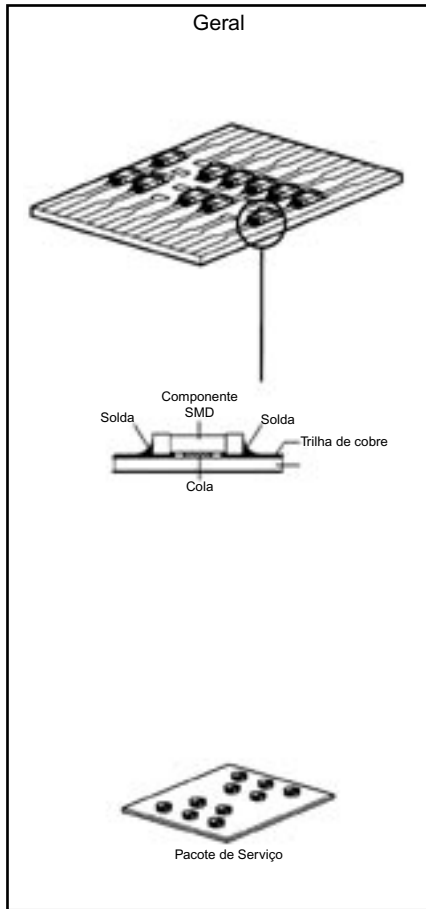


Gravador

Use um Cassete Universal de Teste CrO2 ou um Cassete Universal de Teste Fe



MANUSEANDO COMPONENTES SMD



Atenção!

Normas de segurança requerem que todos os ajustes sejam realizados para as condições normais e todos os componentes de reposição devem atender as especificações.

Advertência!

Todos os CI's e vários outros semicondutores são suscetíveis à descargas eletrostáticas (ESD).

A falta de cuidados no manuseio pode reduzir drasticamente a vida do componente.

Quando estiver reparando, certifique-se de estar conectado ao mesmo potencial de terra através de uma pulseira de aterramento com resistência.

Mantenha componentes e ferramentas também neste potencial.

Teste de risco de choque e incêndio

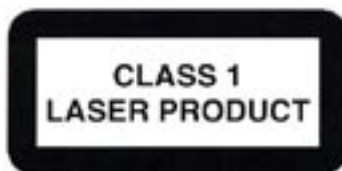
CUIDADO: Após reparar este aparelho e antes de devolvê-lo ao consumidor, meça a resistência entre cada pino do cabo de força (desconectado da tomada e com a chave Power ligada) e a face do painel frontal, botões de controle e a base do chassis.

Qualquer valor de resistência menor que 1 Megohms indica que o aparelho deve ser verificado /reparado antes de ser conectado à rede elétrica e verificado antes de retornar ao consumidor.



NOTA DE SEGURANÇA:

Risco de choque ou incêndio. Componentes marcados com o símbolo ao lado devem ser substituídos apenas por originais. A utilização de componentes não originais pode acarretar risco de incêndio ou choque elétrico.



INSTRUÇÕES DE USO

Veja Manual de Usuário no GIP.

DIAGRAMA CONEXÕES

DVP5500S & DVP5505S WIRING DIAGRAM

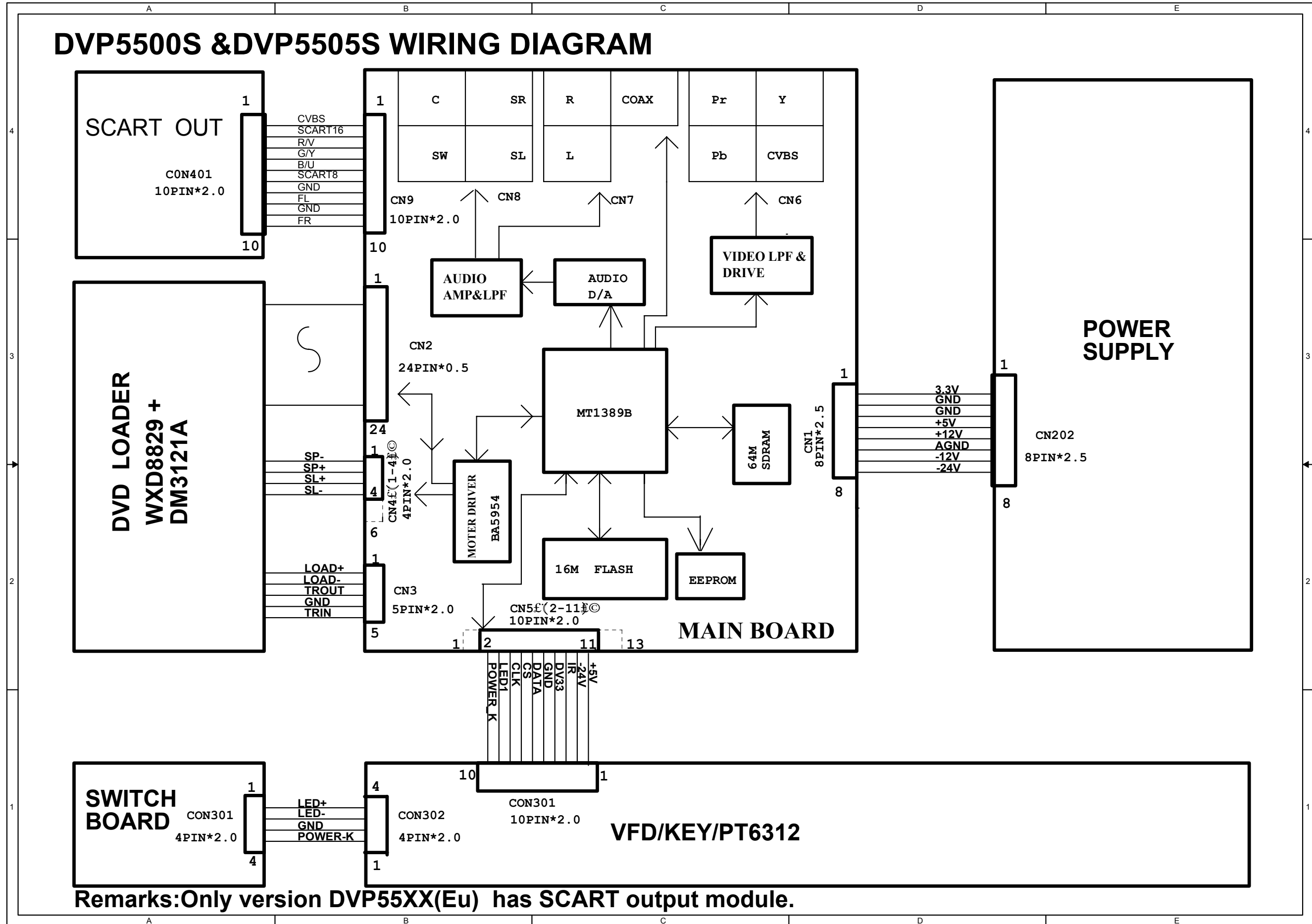
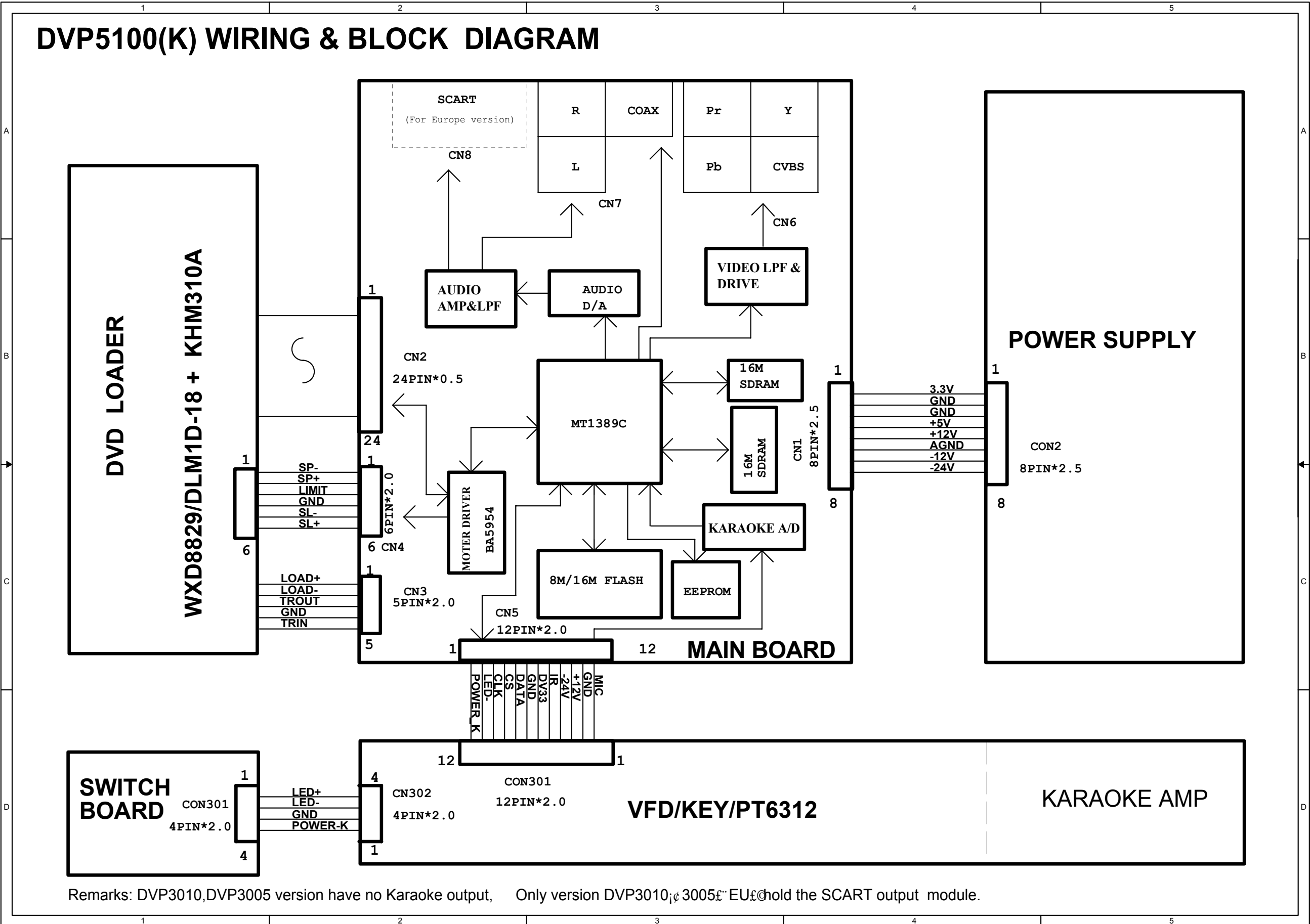
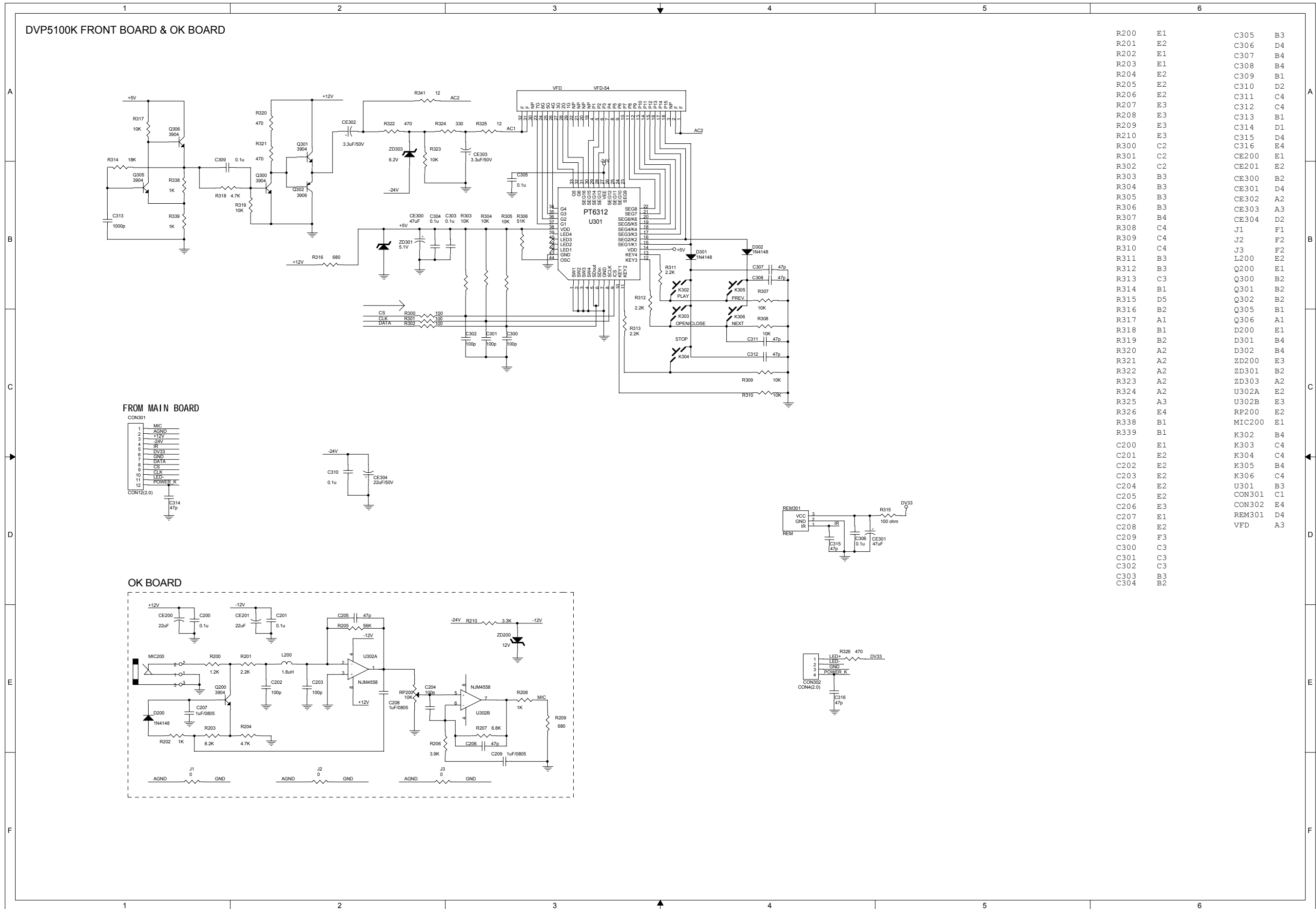


DIAGRAMA EM BLOCOS & CONEXÕES

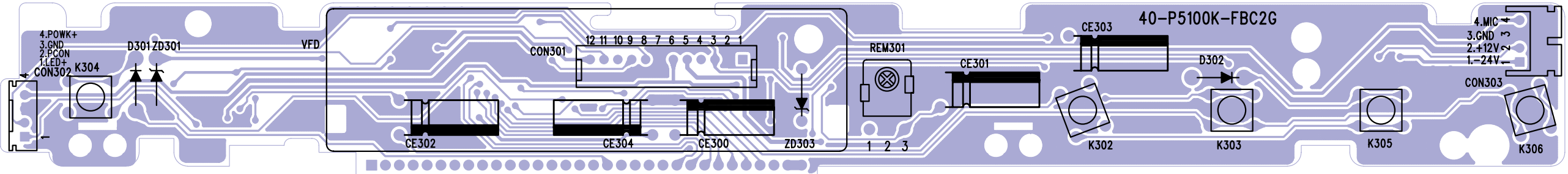


PAINEL FRONTAL & PAINEL OK

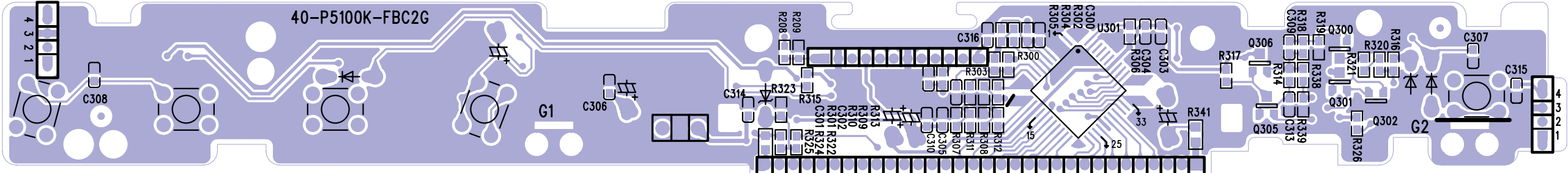


R200	E1	C305	B3
R201	E2	C306	D4
R202	E1	C307	B4
R203	E1	C308	B4
R204	E2	C309	B1
R205	E2	C310	D2
R206	E2	C311	C4
R207	E3	C312	C4
R208	E3	C313	B1
R209	E3	C314	D1
R210	E3	C315	D4
R300	C2	C316	E4
R301	C2	CE200	E1
R302	C2	CE201	E2
R303	B3	CE300	B2
R304	B3	CE301	D4
R305	B3	CE302	A2
R306	B3	CE303	A3
R307	B4	CE304	D2
R308	C4	J1	F1
R309	C4	J2	F2
R310	C4	J3	F2
R311	B3	L200	E2
R312	B3	Q200	E1
R313	C3	Q300	B2
R314	B1	Q301	B2
R315	D5	Q302	B2
R316	B2	Q305	B1
R317	A1	Q306	A1
R318	B1	D200	E1
R319	B2	D301	B4
R320	A2	D302	B4
R321	A2	ZD200	E3
R322	A2	ZD301	B2
R323	A2	ZD303	A2
R324	A2	U302A	E2
R325	A3	U302B	E3
R326	E4	RP200	E2
R338	B1	MIC200	E1
R339	B1	K302	B4
C200	E1	K303	C4
C201	E2	K304	C4
C202	E2	K305	B4
C203	E2	K306	C4
C204	E2	U301	B3
C205	E2	CON301	C1
C206	E3	CON302	E4
C207	E1	REM301	D4
C208	E2	VFD	A3
C209	F3		
C300	C3		
C301	C3		
C302	C3		
C303	B3		
C304	B2		

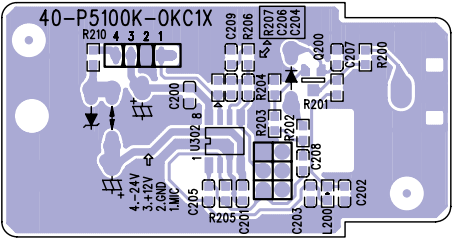
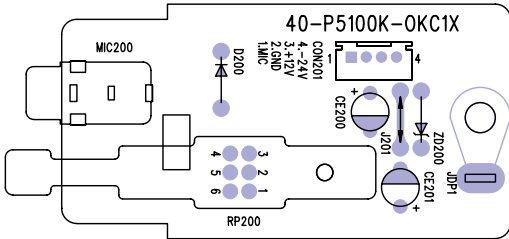
PAINEL FRONTAL - LAYOUT SUPERIOR



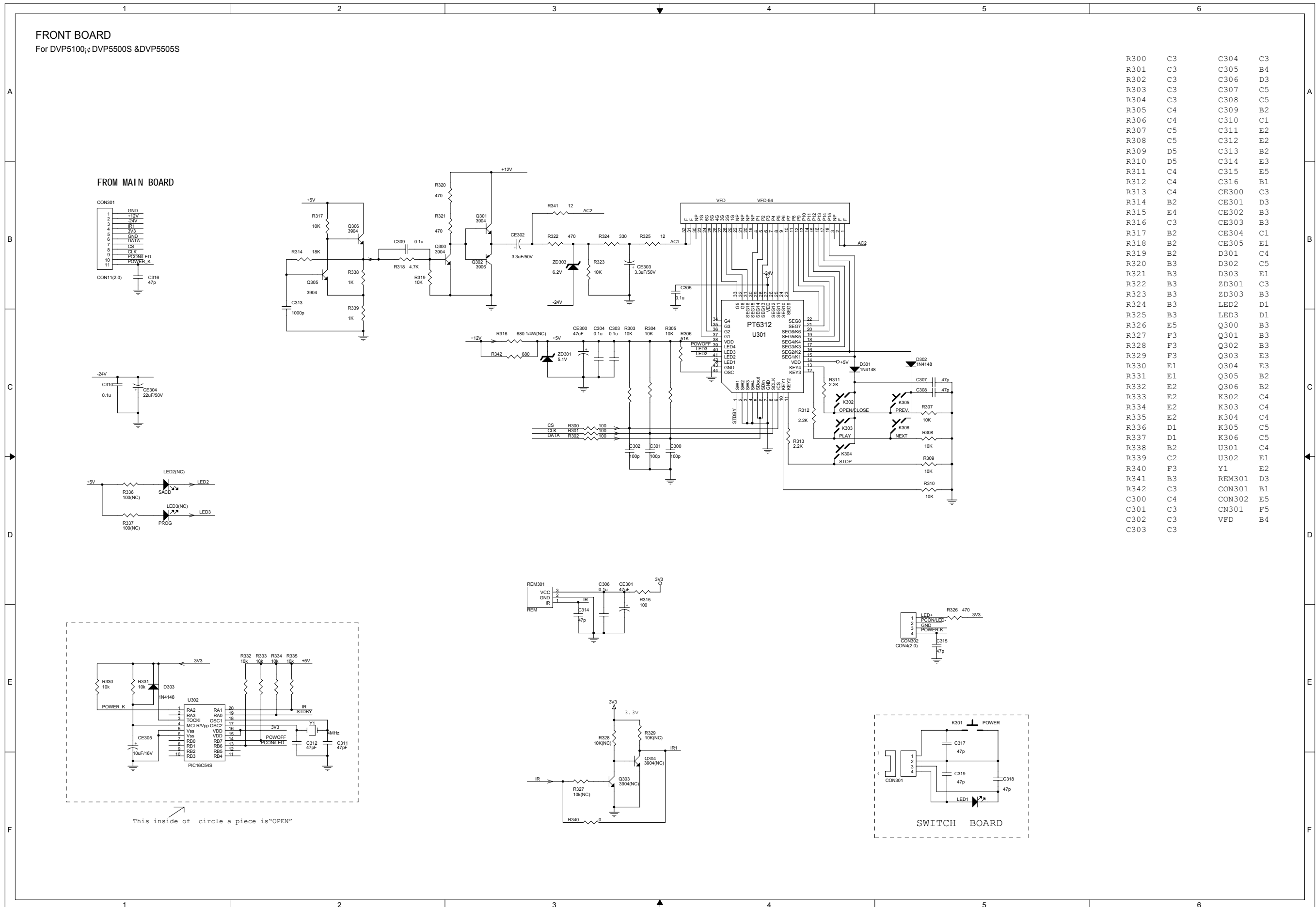
PAINEL FRONTAL - LAYOUT INFERIOR



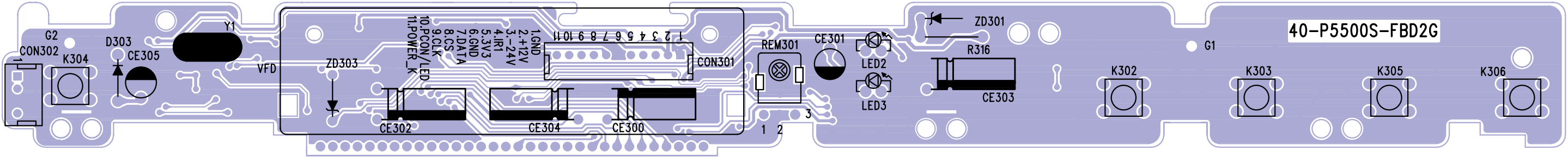
PAINEL OK - LAYOUT SUPERIOR E INFERIOR



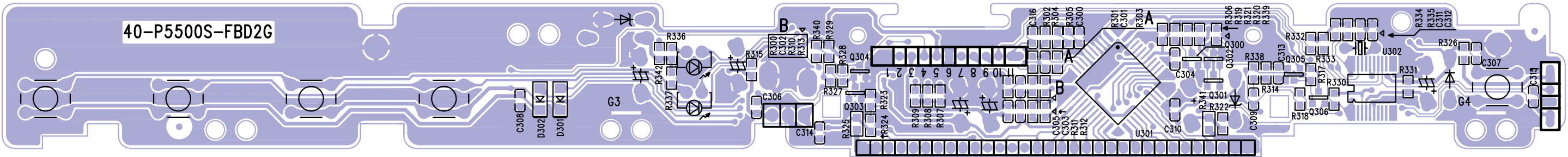
PANEL FRONTAL



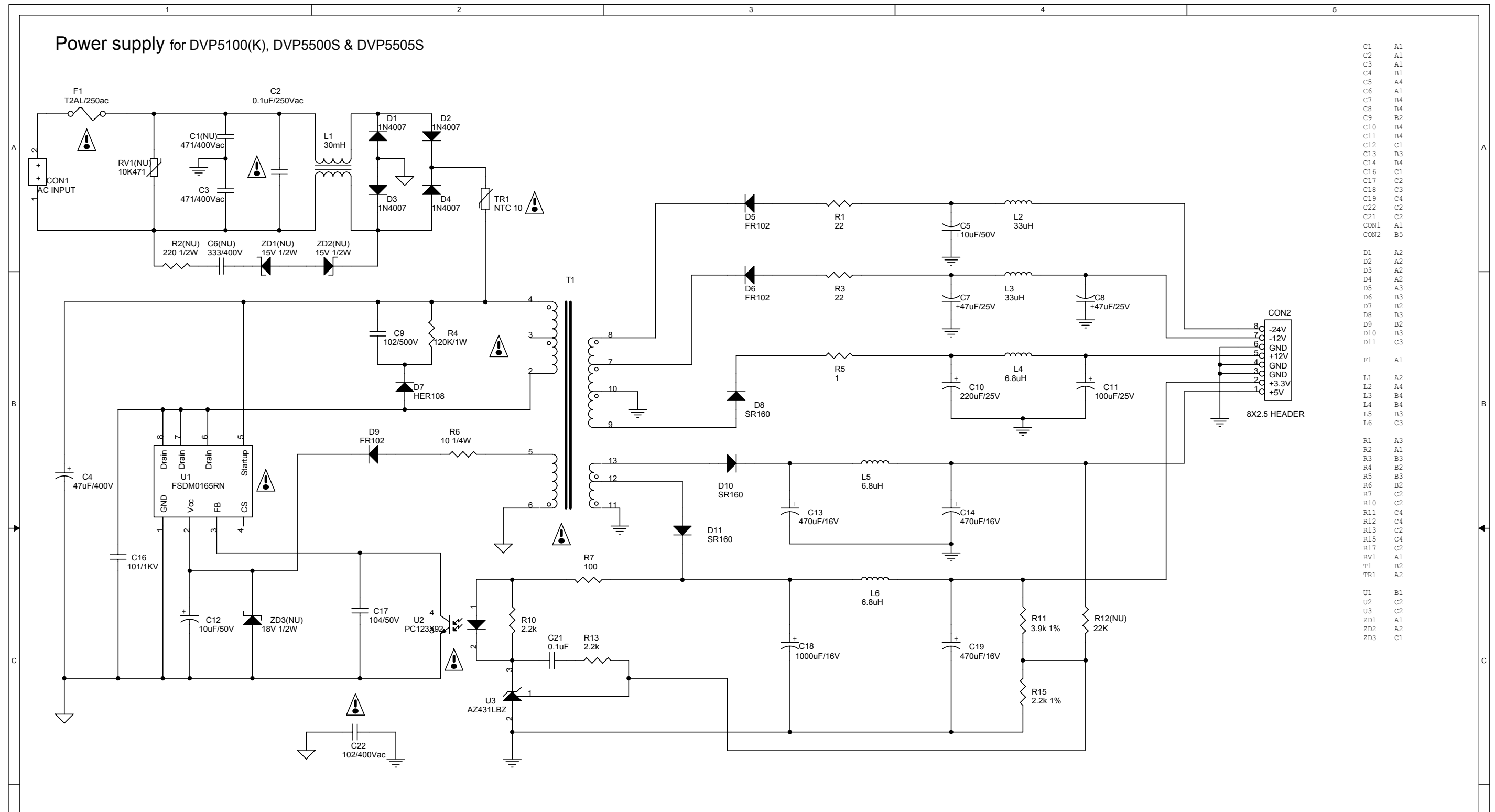
PAINEL FRONTAL - LAYOUT SUPERIOR (DVP5500S)




PAINEL FRONTAL - LAYOUT INFERIOR (DVP5500S)



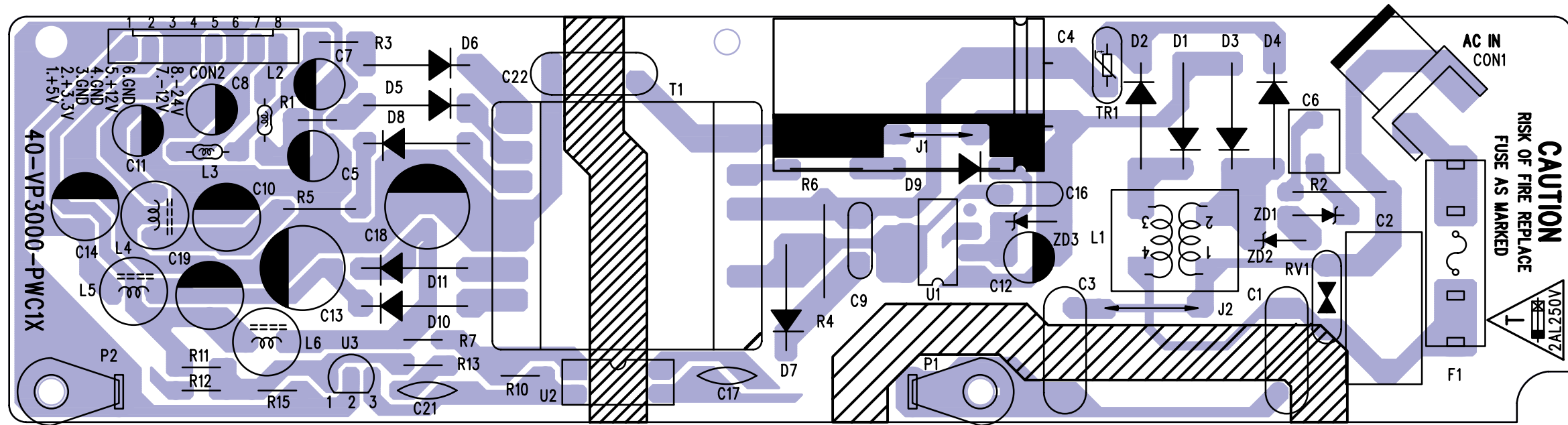
PAINEL FONTE DE ALIMENTAÇÃO



C1	A1
C2	A1
C3	A1
C4	B1
C5	A4
C6	A1
C7	B4
C8	B4
C9	B2
C10	B4
C11	B4
C12	C1
C13	B3
C14	B4
C16	C1
C17	C2
C18	C3
C19	C4
C22	C2
C21	C2
CON1	A1
CON2	B5
D1	A2
D2	A2
D3	A2
D4	A2
D5	A3
D6	B3
D7	B2
D8	B3
D9	B2
D10	B3
D11	C3
F1	A1
L1	A2
L2	A4
L3	B4
L4	B4
L5	B3
L6	C3
R1	A3
R2	A1
R3	B3
R4	B2
R5	B3
R6	B2
R7	C2
R10	C2
R11	C4
R12	C4
R13	C2
R15	C4
R17	C2
RV1	A1
T1	B2
TR1	A2
U1	B1
U2	C2
U3	C2
ZD1	A1
ZD2	A2
ZD3	C1

ATENÇÃO:
 As partes marcadas com  são partes importantes de segurança.
 Use por favor as peças que têm o número de peças designado sem falha

PAINEL POWER - LAYOUT SUPERIOR

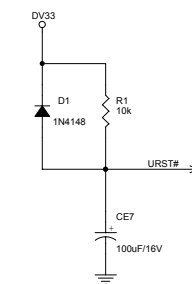
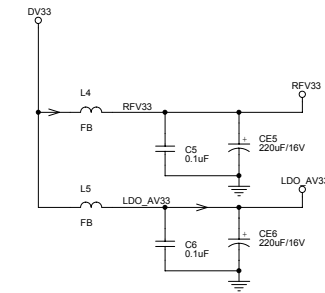
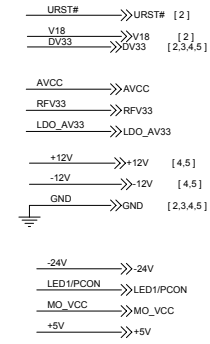
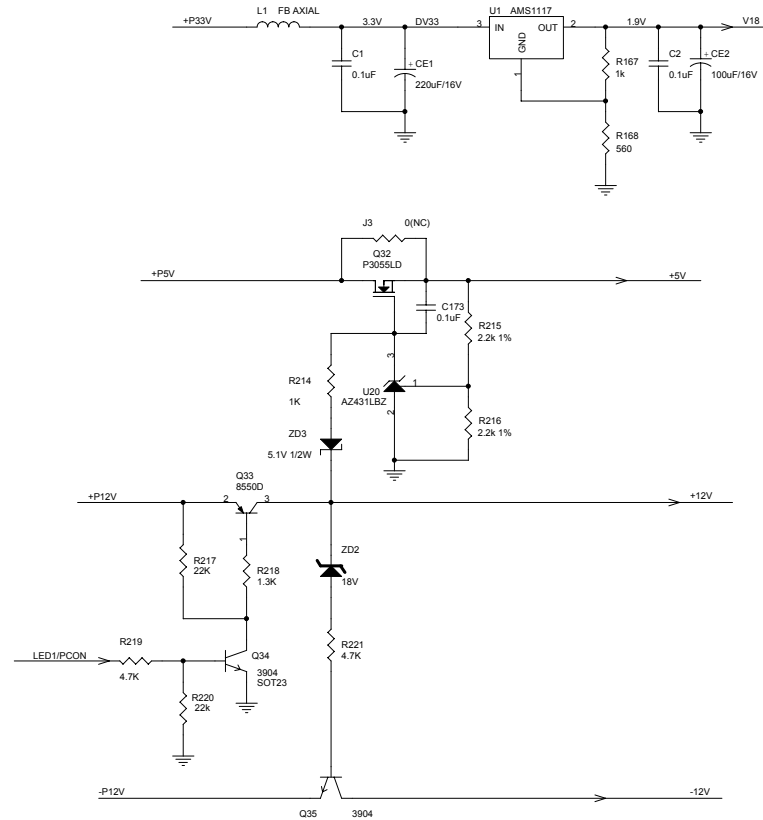
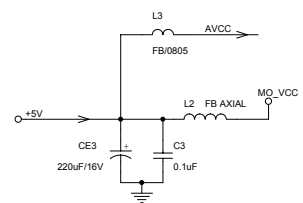
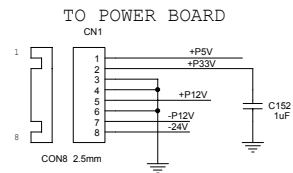


PAINEL INDEX & POWER, RESET

1 INDEX & POWER, RESET
For DVP3010, DVP5100 & DVP5100K

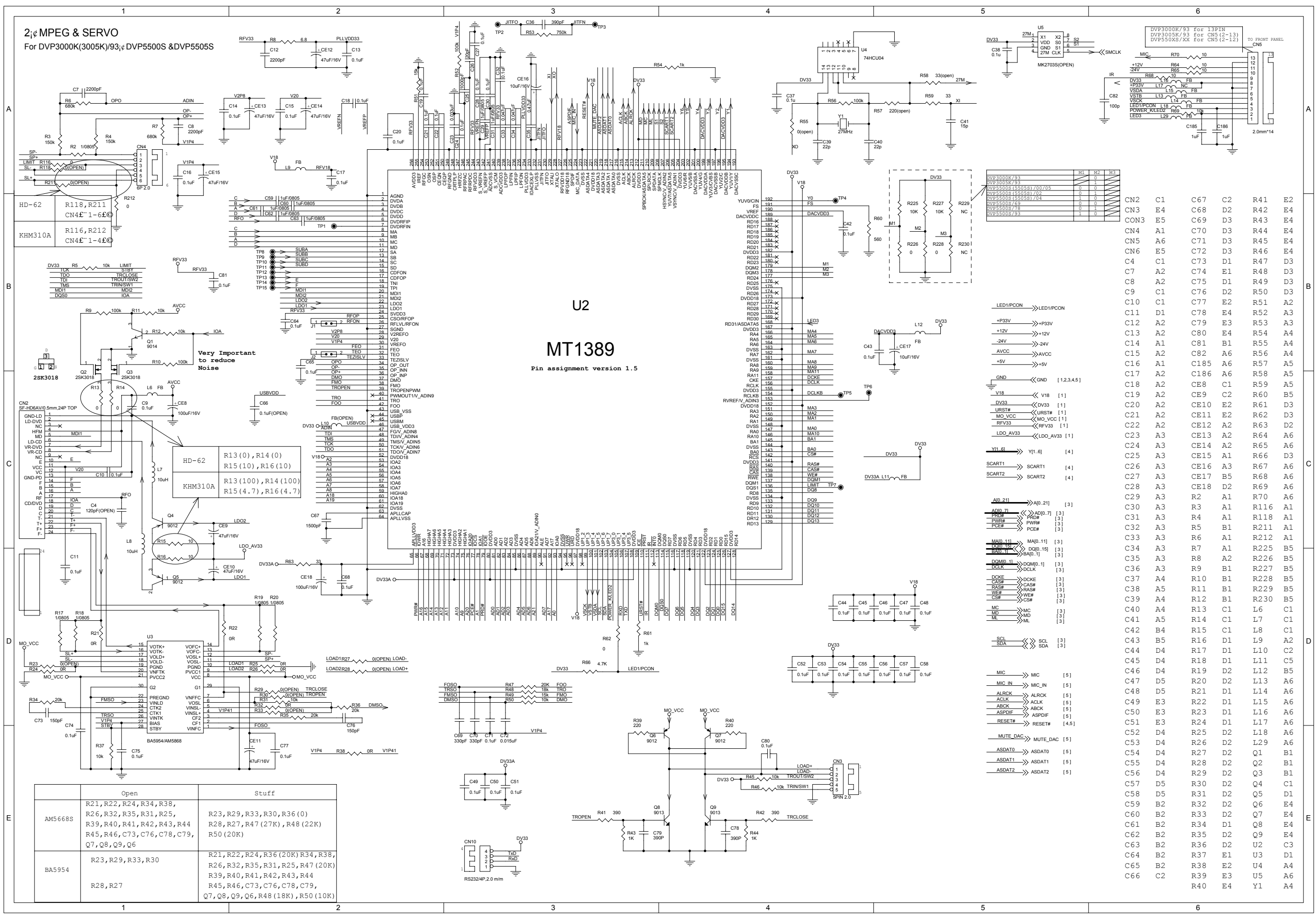
- 1 INDEX & POWER, RESET
- 2 RF, SERVO & MPEG - MT1389C&MT1389EE
- 3 MEMORY - SDRAM, FLASH/EEPROM, VIDEO OUT
- 4 AUDIO DAC & AUDIO OUT
- 5 FRONT BOARD
- 6 POWER SUPPLY

NAME	TYPE	DEVICE
VCC	Digital 5V	SUPPLY
DV33	Digital 3.3V	MT1389E
RFV33	Servo 3.3V	MT1389E
AVCC	RF 5V	PICKUP HEADER
V18	Digital 1.8V	MT1389E
+12V	Audio +12V	OP AMP.
-12V	Audio -12V	OP AMP.
+5V	Servo 5V	Motor drive
-24V	VFD	VFD Drive

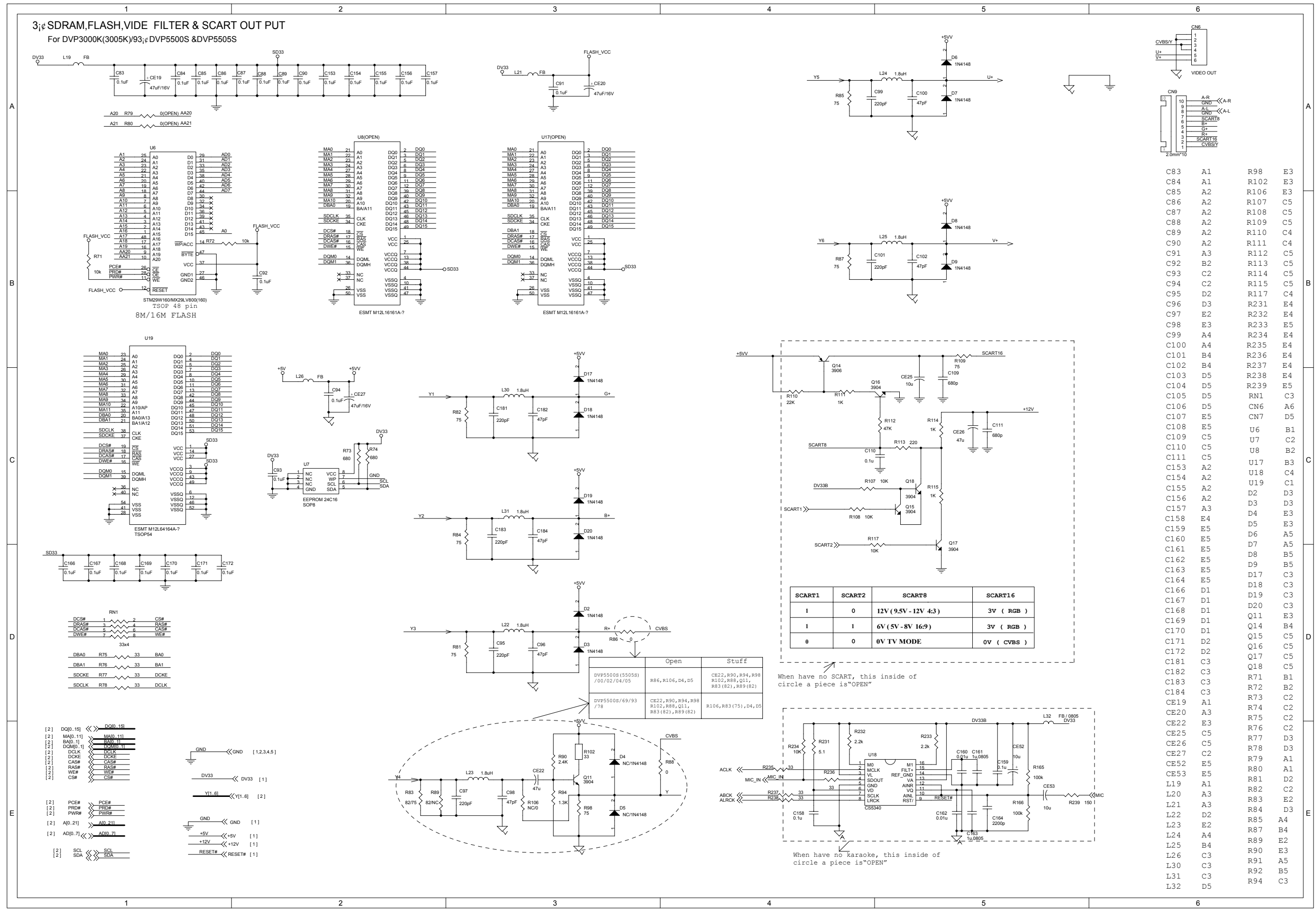


- CN1 D1
- R1 E5
- R167 C3
- R168 C3
- R169 D3
- R214 D3
- R215 D3
- R216 D3
- R217 E3
- R218 E3
- R219 E2
- R220 E3
- R221 E3
- ZD2 E3
- ZD3 E3
- D1 E5
- C1 C3
- C2 C4
- C3 E1
- C5 D5
- C6 D5
- C152 C2
- C173 D3
- CE1 C3
- CE2 C4
- CE3 E1
- CE5 C5
- CE6 D5
- CE7 E5
- L1 C3
- L2 E1
- L3 E1
- L4 C5
- L5 D5
- Q32 D3
- Q33 E3
- Q34 E3
- Q35 F3
- U1 C3
- U20 D3

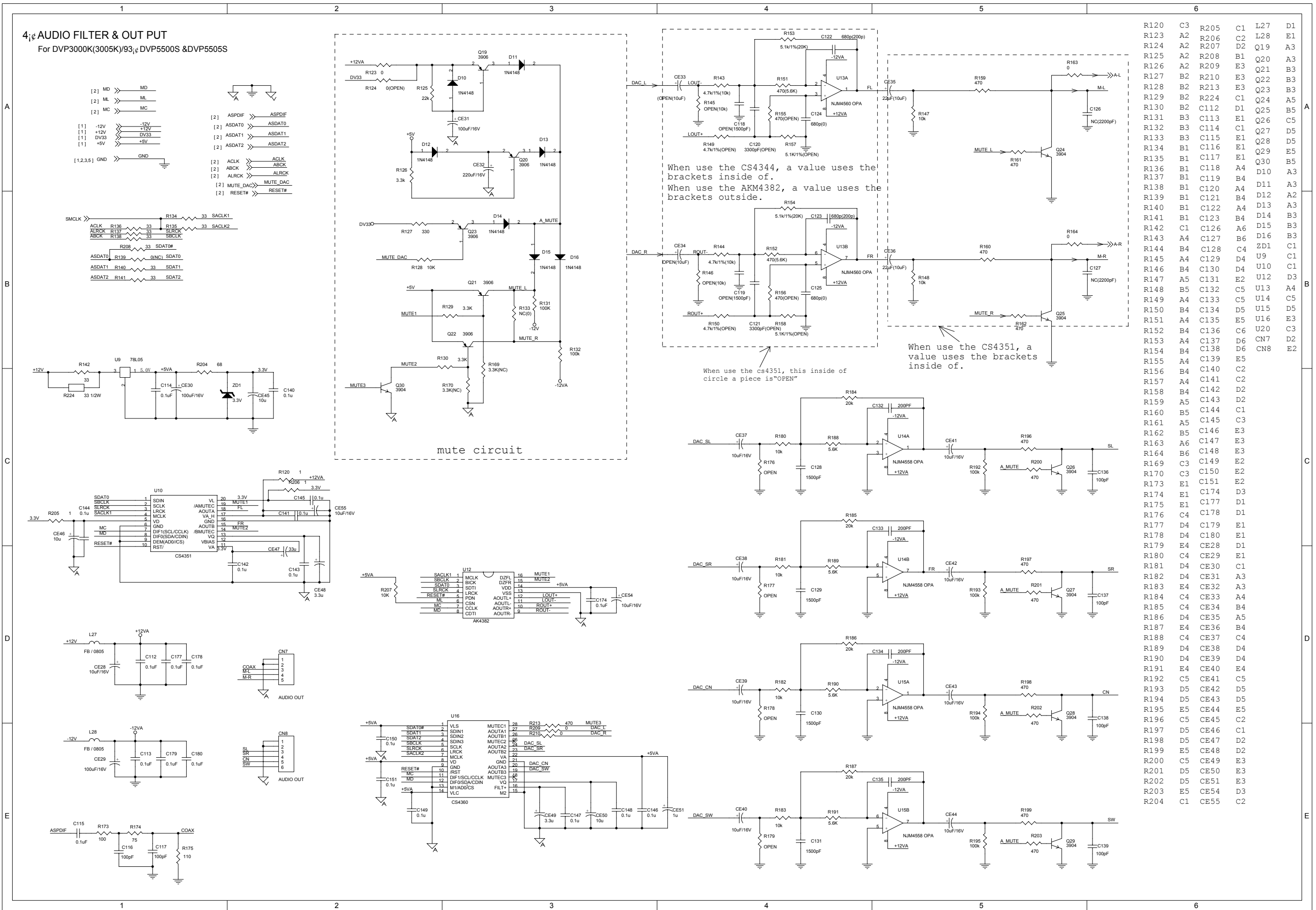
PAINEL MPEG & SERVO (DVP5505S)



PAINEL SDRAM, FLASH, FILTRO DE VÍDEO & SAÍDA SCART

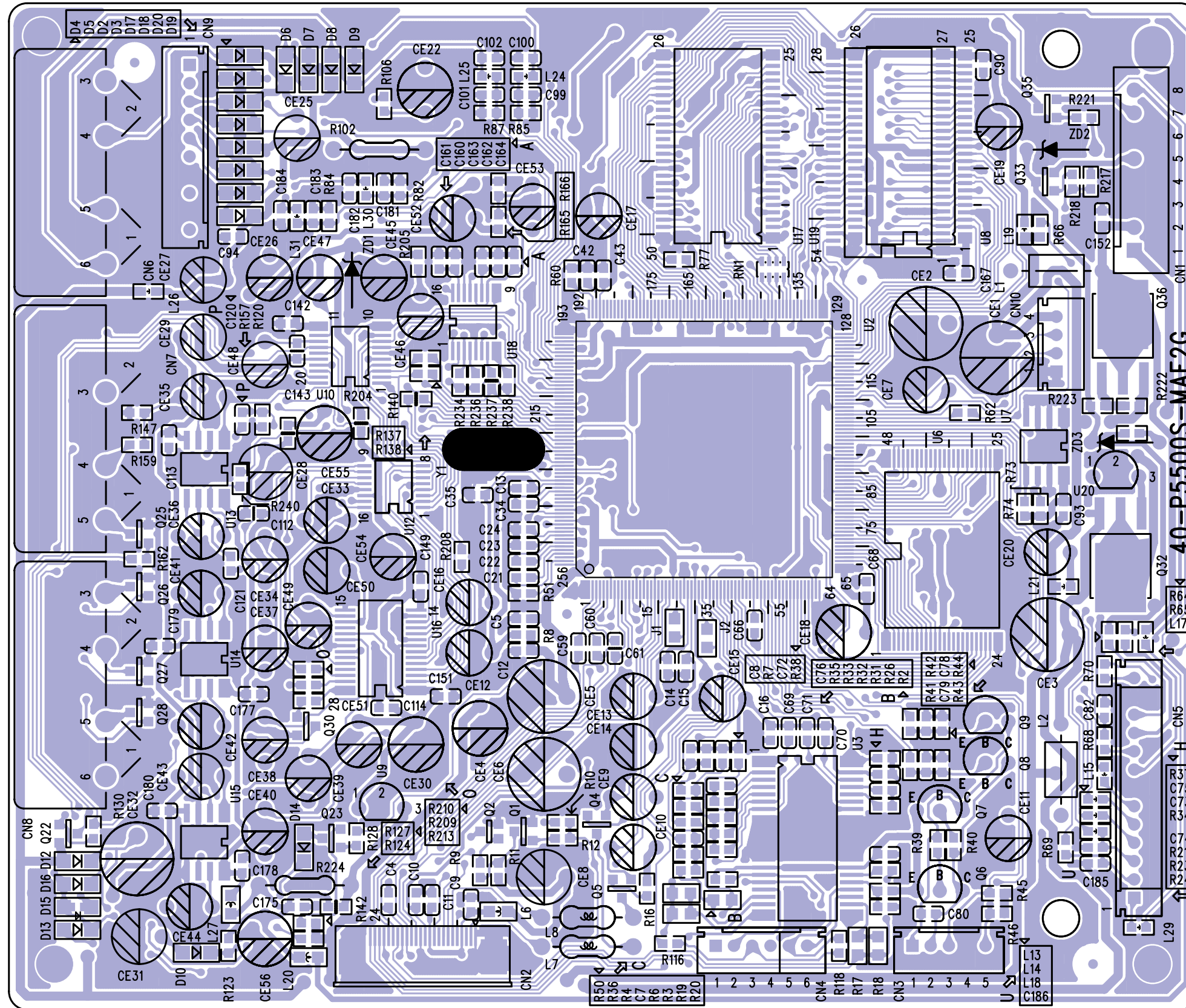


PAINEL FILTRO DE ÁUDIO & SAÍDA



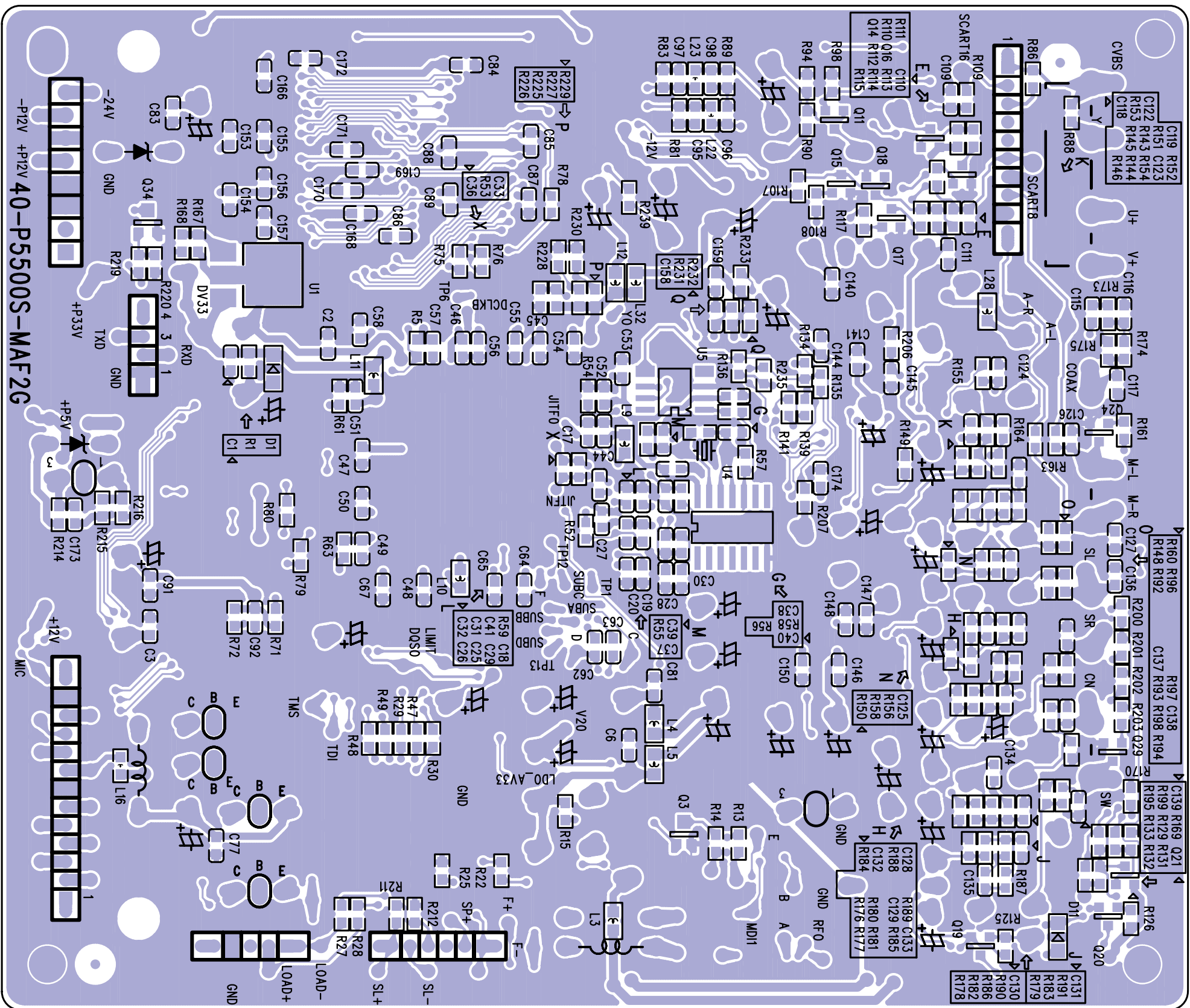
R120	C3	R205	C1	L27	D1
R123	A2	R206	C2	L28	E1
R124	A2	R207	D2	Q19	A3
R125	A2	R208	B1	Q20	A3
R126	A2	R209	E3	Q21	B3
R127	B2	R210	E3	Q22	B3
R128	B2	R213	E3	Q23	B3
R129	B2	R224	C1	Q24	A5
R130	B2	C112	D1	Q25	B5
R131	B3	C113	E1	Q26	C5
R132	B3	C114	C1	Q27	D5
R133	B3	C115	E1	Q28	D5
R134	B1	C116	E1	Q29	E5
R135	B1	C117	E1	Q30	B5
R136	B1	C118	A4	D10	A3
R137	B1	C119	B4	D11	A3
R138	B1	C120	A4	D12	A2
R139	B1	C121	B4	D13	A3
R140	B1	C122	A4	D14	B3
R141	B1	C123	B4	D15	B3
R142	C1	C126	A6	D16	B3
R143	A4	C127	B6	ZD1	C1
R144	B4	C128	C4	U9	C1
R145	A4	C129	D4	U10	C1
R146	B4	C130	D4	U11	D3
R147	A5	C131	E2	U12	D3
R148	B5	C132	C5	U13	A4
R149	A4	C133	C5	U14	C5
R150	B4	C134	D5	U15	D5
R151	A4	C135	E5	U16	E3
R152	B4	C136	C6	U20	C3
R153	A4	C137	D6	CN7	D2
R154	B4	C138	D6	CN8	E2
R155	A4	C139	E5		
R156	B4	C140	C2		
R157	A4	C141	C2		
R158	B4	C142	D2		
R159	A5	C143	D2		
R160	B5	C144	C1		
R161	A5	C145	C3		
R162	B5	C146	E3		
R163	A6	C147	E3		
R164	B6	C148	E3		
R169	C3	C149	E2		
R170	C3	C150	E2		
R173	E1	C151	E2		
R174	E1	C174	D3		
R175	E1	C177	D1		
R176	C4	C178	D1		
R177	D4	C179	E1		
R178	D4	C180	E1		
R179	E4	CE28	D1		
R180	C4	CE29	E1		
R181	D4	CE30	C1		
R182	D4	CE31	A3		
R183	E4	CE32	A3		
R184	C4	CE33	A4		
R185	C4	CE34	B4		
R186	D4	CE35	A5		
R187	E4	CE36	B4		
R188	C4	CE37	C4		
R189	D4	CE38	D4		
R190	D4	CE39	D4		
R191	E4	CE40	E4		
R192	C5	CE41	C5		
R193	D5	CE42	D5		
R194	D5	CE43	D5		
R195	E5	CE44	E5		
R196	C5	CE45	C2		
R197	D5	CE46	C1		
R198	D5	CE47	D2		
R199	E5	CE48	D2		
R200	C5	CE49	E3		
R201	D5	CE50	E3		
R202	D5	CE51	E3		
R203	E5	CE54	D3		
R204	C1	CE55	C2		

PAINEL MPEG - LAYOUT SUPERIOR



40-P5500S-MAF2G

PAINEL MPEG - LAYOUT VISTA INFERIOR



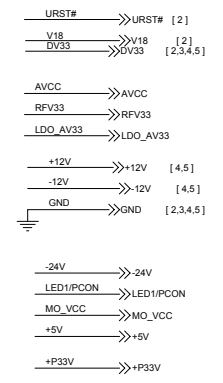
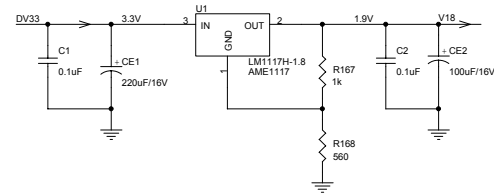
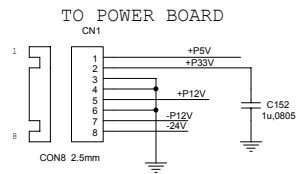
PAINEL INDEX & POWER, RESET (DVP5505S)

1 INDEX & POWER, RESET

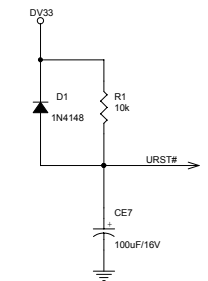
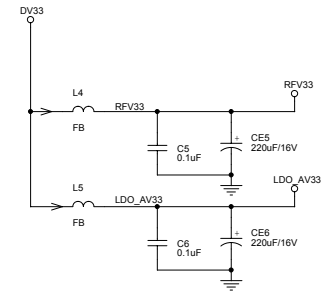
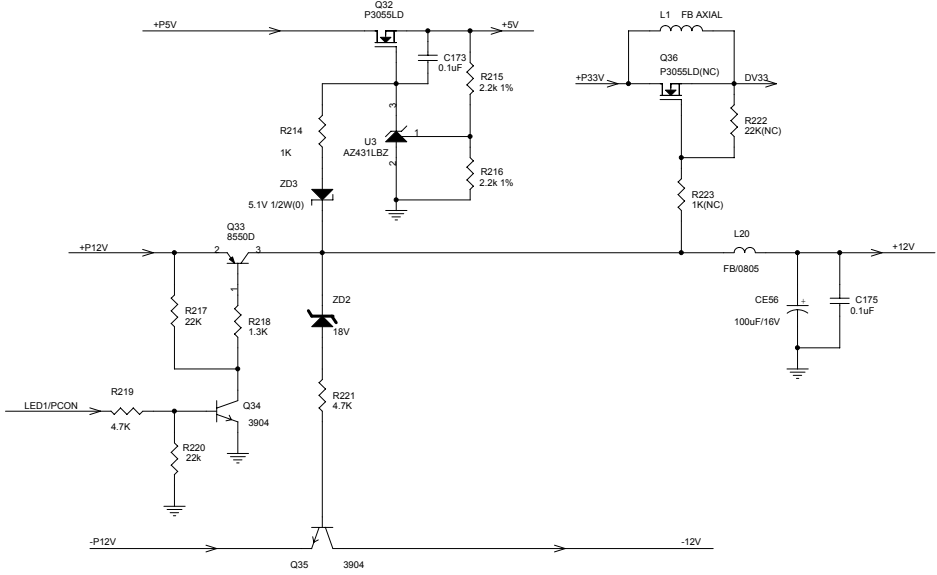
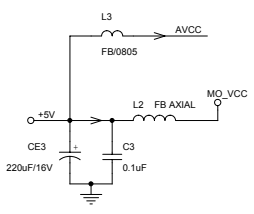
For DVP5500S & DVP5505S

- 1 INDEX & POWER, RESET
- 2 RF, SERVO & MPEG - MT1389C&MT1389EE
- 3 MEMORY - SDRAM, FLASH/EEPROM, VIDEO OUT
- 4 AUDIO DAC & AUDIO OUT

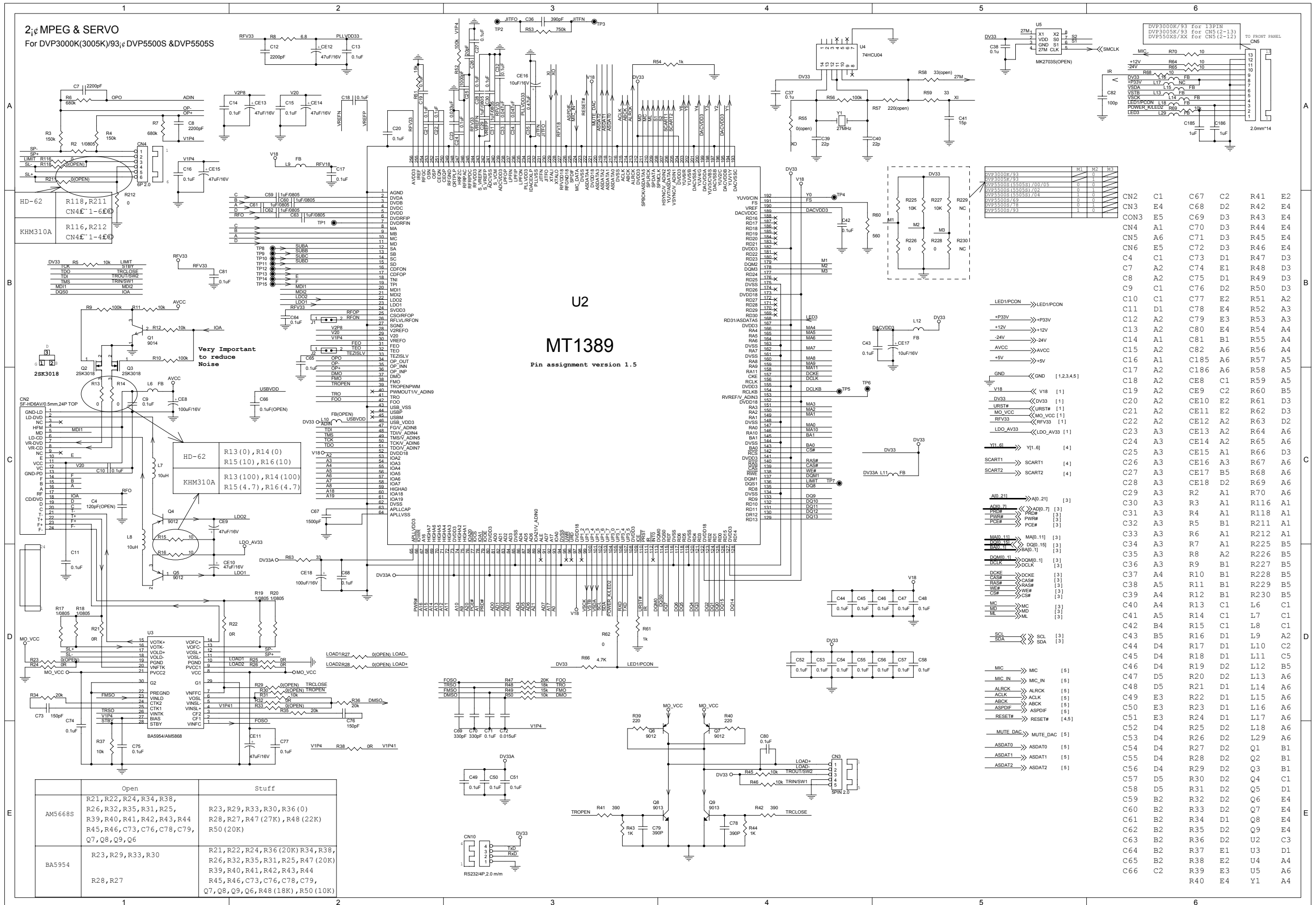
NAME	TYPE	DEVICE
DV33	Digital 3.3V	MT1389E
RFV33	Servo 3.3V	MT1389E
LDO_AV33	Laser 3.3V	PICKUP HEADER
AVCC	RF 5V	PICKUP HEADER
V18	Digital 1.8V	MT1389E
+12VA	Audio +12V	OP AMP.
-12VA	Audio -12V	OP AMP.
MO_VCC	Servo 5V	Motor drive
+5V	MUTE 5V	MUTE drive
+5VA	Audio D/A 5V	Audio D/A SUPPLY
-24V	VFD	VFD Drive



- R1 E5
- R167 C3
- R168 D3
- R214 D3
- R215 D3
- R216 D3
- R217 E3
- R218 E3
- R219 E2
- R220 E3
- R221 E3
- R222 D4
- R223 D4
- ZD2 E3
- ZD3 E3
- D1 E5
- CN1 D1
- C1 C3
- C2 C4
- C3 E1
- C5 D5
- C6 D5
- C152 C2
- C173 D3
- C175 E4
- CE1 C3
- CE2 C4
- CE3 E1
- CE5 D5
- CE6 D5
- CE7 E5
- CE56 E4
- L1 D4
- L2 E1
- L3 E1
- L4 C5
- L5 D5
- L20 E4
- Q32 D3
- Q33 E3
- Q34 E3
- Q35 F3
- Q36 D3
- U1 C3
- U20 D3

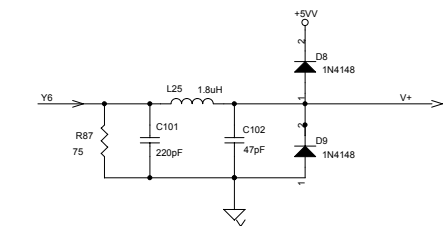
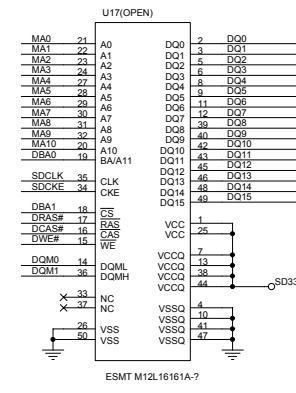
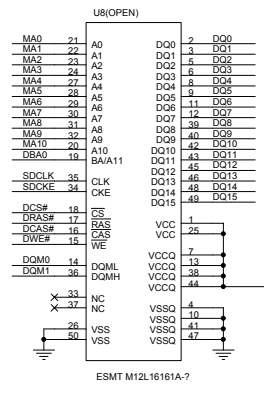
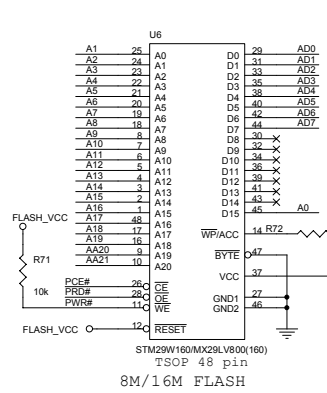
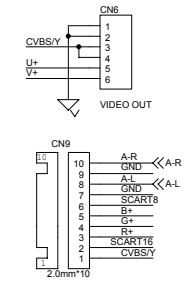
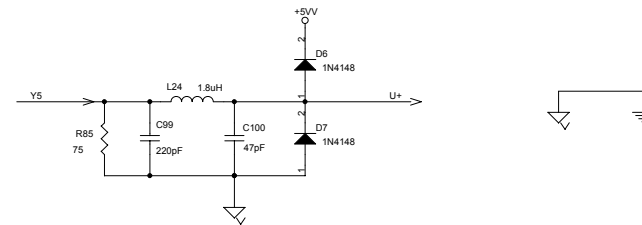
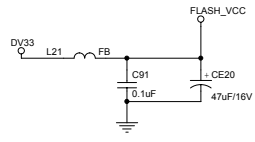
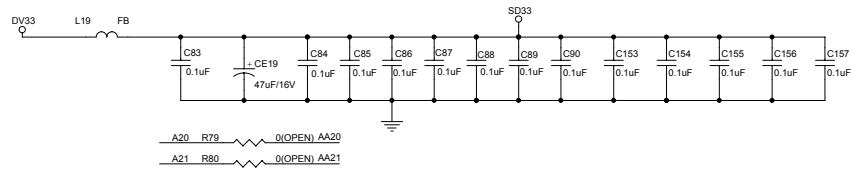


PANEL MPEG & SERVO (DVP5505S)

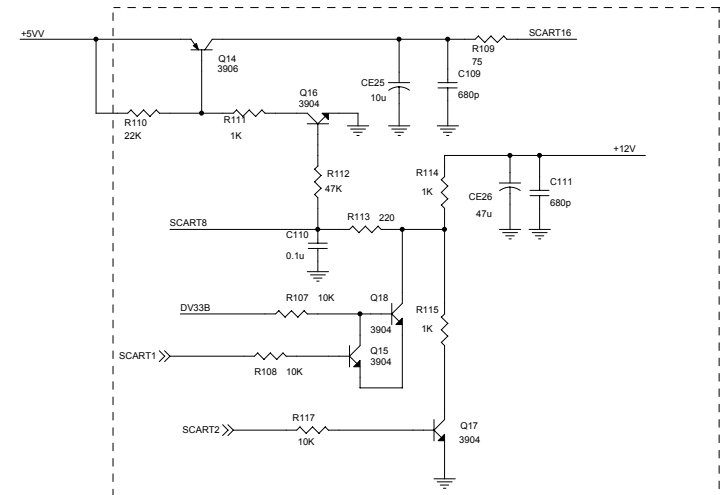
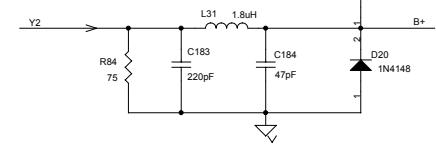
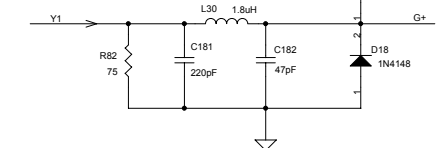
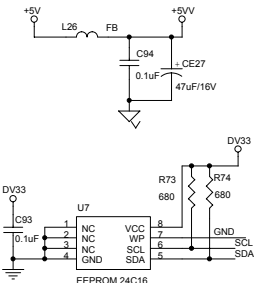
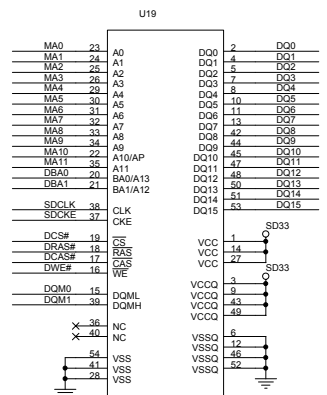


PAINEL SDRAM, FLASH, FILTRO DE VÍDEO & SAÍDA SCART (DVP5505S)

3 ϕ SDRAM, FLASH, VIDE FILTER & SCART OUT PUT
For DVP3000K(3005K)/93 ϕ DVP5500S & DVP5505S



C83	A1	R98	E3
C84	A1	R102	E3
C85	A2	R106	E3
C86	A2	R107	C5
C87	A2	R108	C5
C88	A2	R109	C5
C89	A2	R110	C4
C90	A2	R111	C4
C91	A3	R112	C5
C92	B2	R113	C5
C93	C2	R114	C5
C94	C2	R115	C5
C95	D2	R117	C4
C96	D3	R231	E4
C97	E2	R232	E4
C98	E3	R233	E5
C99	A4	R234	E4
C100	A4	R235	E4
C101	B4	R236	E4
C102	B4	R237	E4
C103	D5	R238	E4
C104	D5	R239	E5
C105	D5	RN1	C3
C106	D5	CN6	A6
C107	E5	CN7	D5
C108	E5	U6	B1
C109	C5	U7	C2
C110	C5	U8	B2
C111	C5	U17	B3
C153	A2	U18	C4
C154	A2	U19	C1
C155	A2	D2	D3
C156	A2	D3	D3
C157	A3	D4	E3
C158	E4	D5	E3
C159	E5	D6	A5
C160	E5	D7	A5
C162	E5	D8	B5
C163	E5	D9	B5
C164	E5	D17	C3
C166	D1	D18	C3
C167	D1	D19	C3
C168	D1	D20	C3
C169	D1	Q11	E3
C170	D1	Q14	B4
C171	D2	Q15	C5
C172	D2	Q16	C5
C181	C3	Q17	C5
C182	C3	Q18	C5
C183	C3	R71	B1
C184	C3	R72	B2
C184	C3	R73	C2
CE19	A1	R74	C2
CE20	A3	R75	C2
CE22	E3	R76	C2
CE25	C5	R77	D3
CE26	C5	R78	D3
CE27	C2	R79	A1
CE52	E5	R80	A1
CE53	E5	R81	D2
L19	A1	R82	C2
L20	A3	R83	E2
L21	A3	R84	D3
L22	D2	R85	A4
L23	E2	R87	B4
L24	A4	R89	E2
L25	B4	R90	E3
L26	C3	R91	A5
L30	C3	R92	B5
L31	C3	R94	C3
L32	D5		

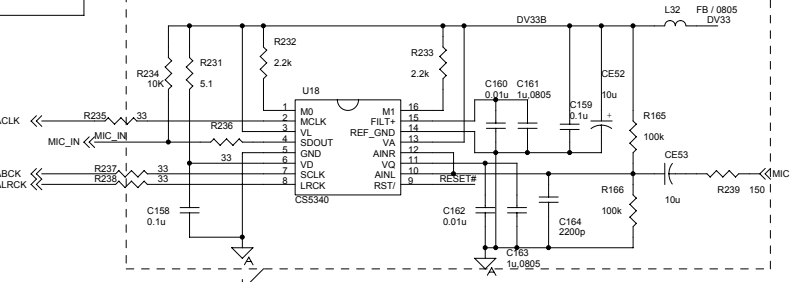
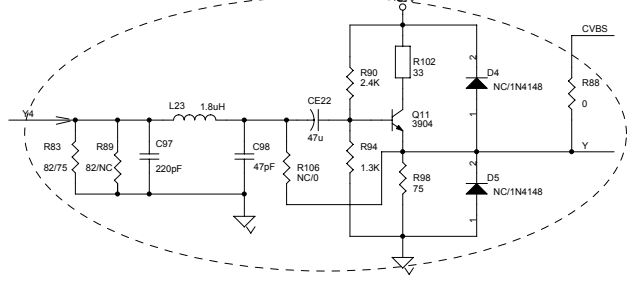
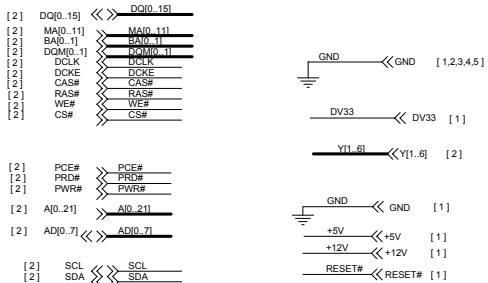
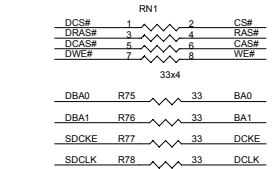
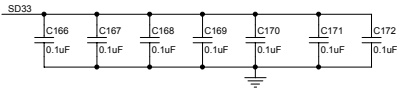


SCART1	SCART2	SCART8	SCART16
1	0	12V (9.5V - 12V 4:3)	3V (RGB)
1	1	6V (5V - 8V 16:9)	3V (RGB)
0	0	0V TV MODE	0V (CVBS)

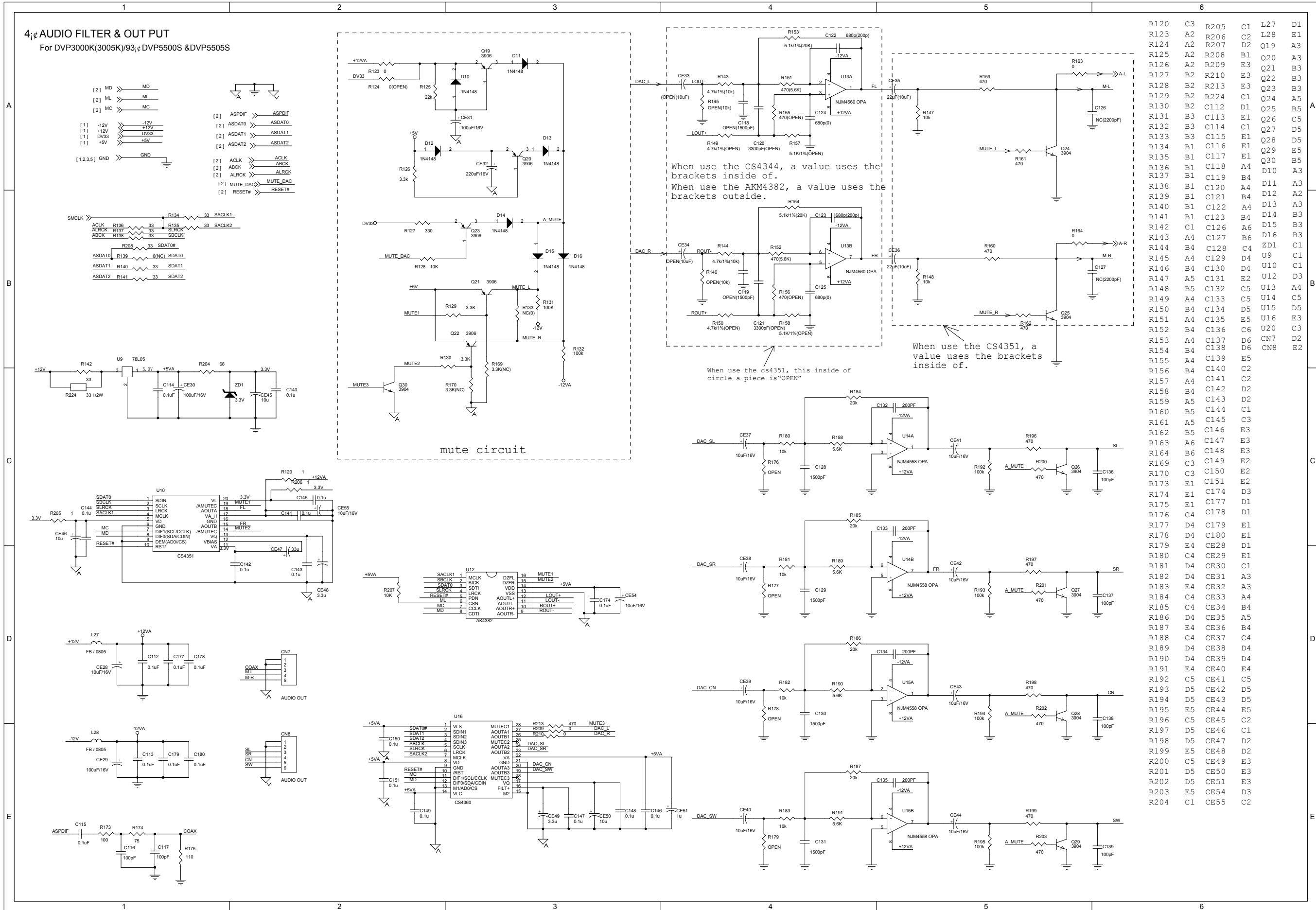
	Open	Stuff
DVP5500S (5505S) / 00/02/04/05	R86, R106, D4, D5	CE22, R90, R94, R98 R102, R86, Q11, R83 (82), R89 (82)
DVP5500S / 69/93 / 78		R106, R83 (75), D4, D5

When have no SCART, this inside of circle a piece is "OPEN"

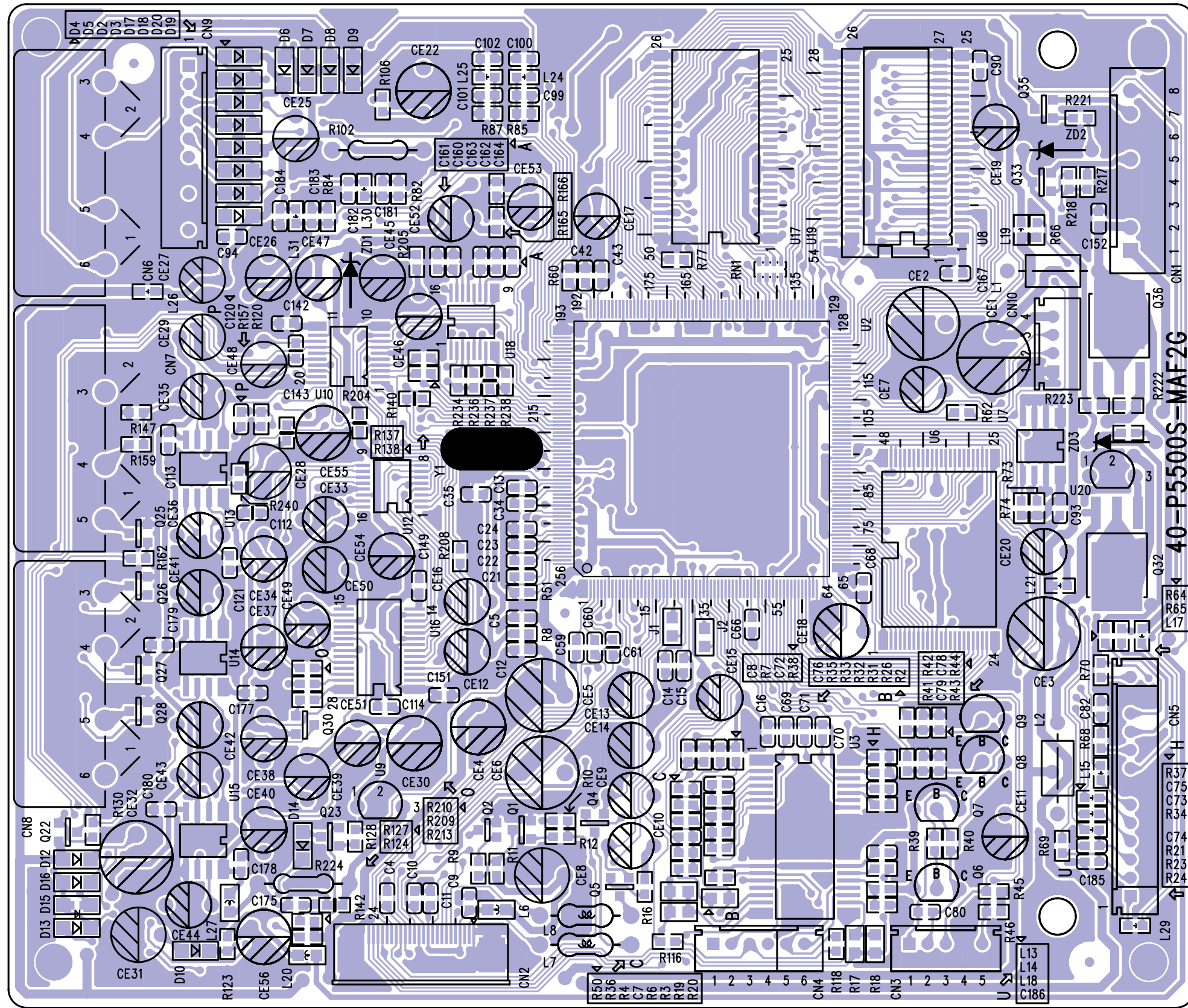
When have no karaoke, this inside of circle a piece is "OPEN"



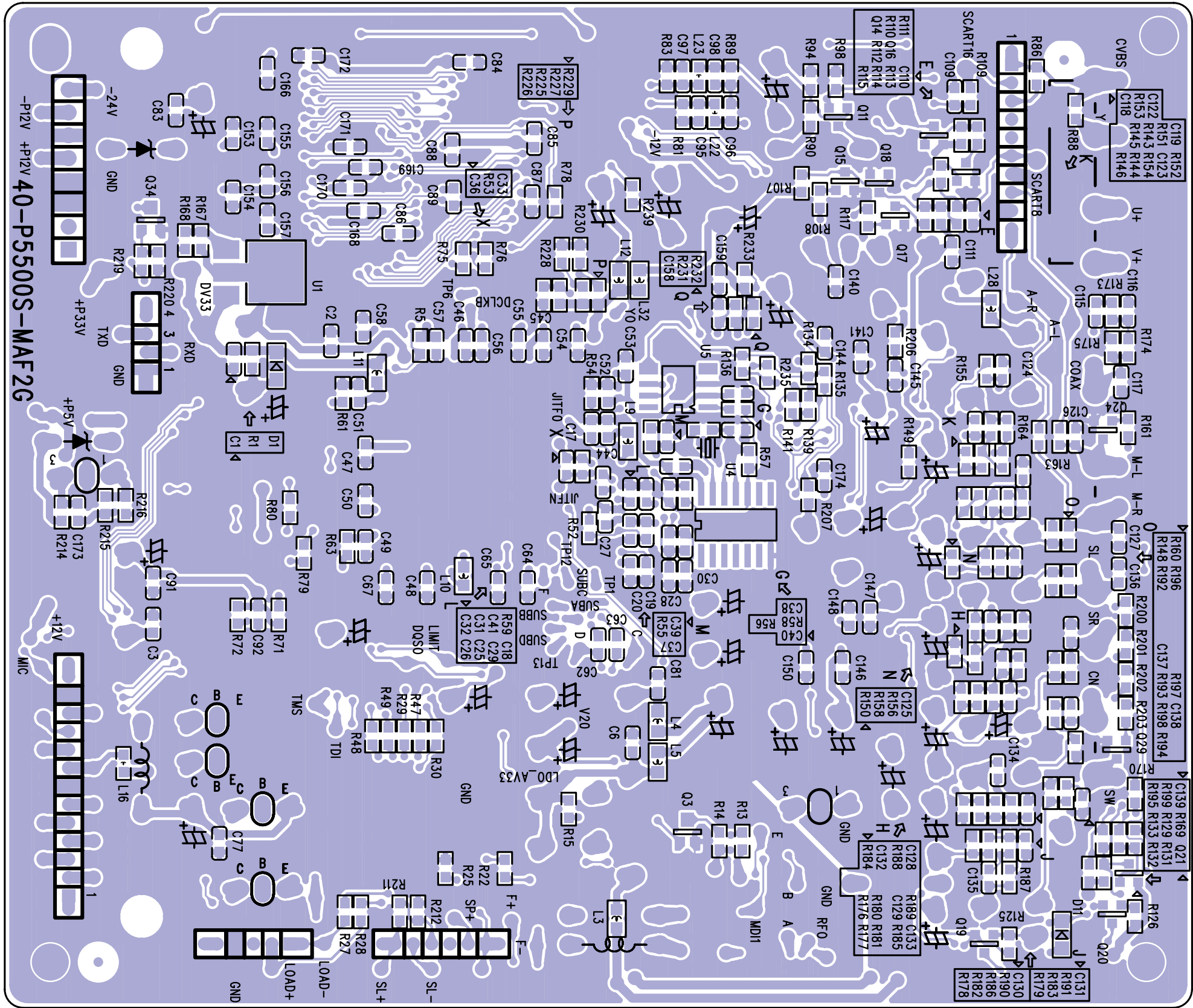
PAINEL FILTRO DE ÁUDIO & SAÍDA (DVP5505S)



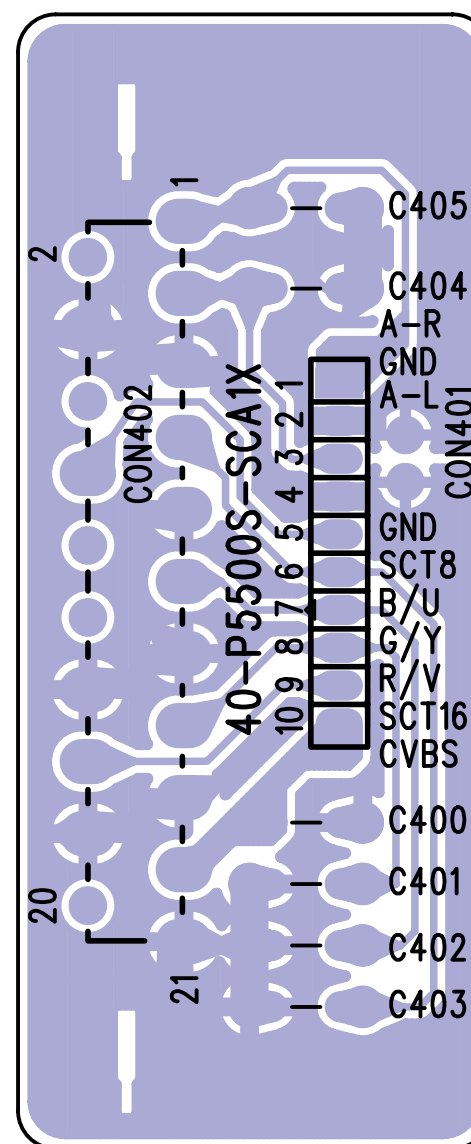
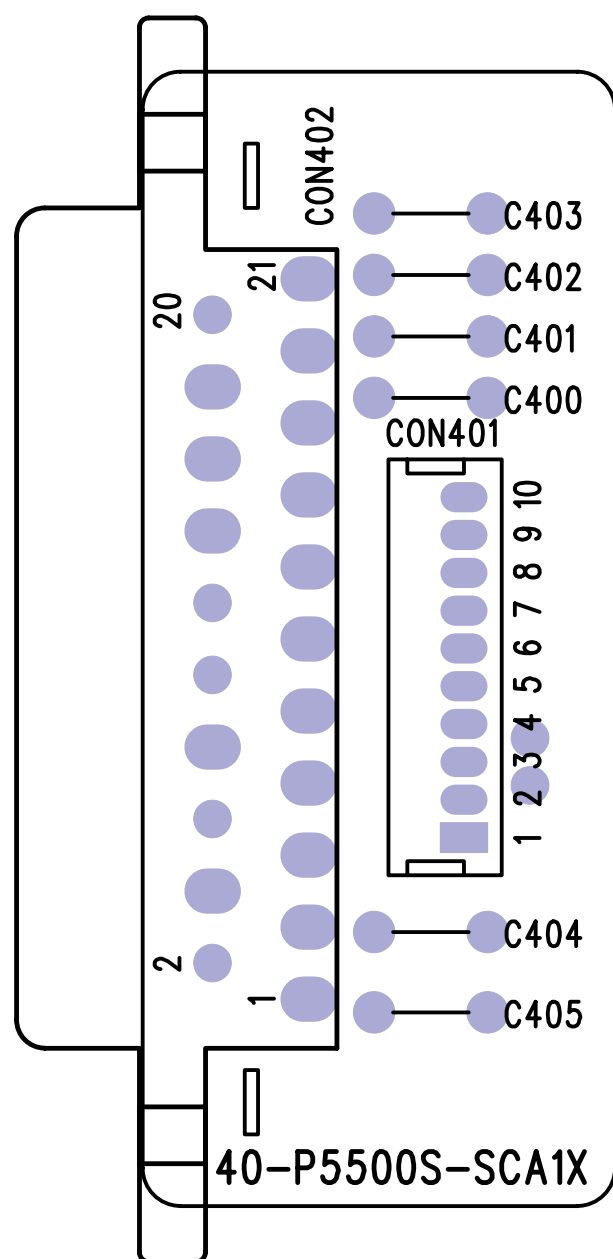
PAINEL MPEG - LAYOUT VISTA SUPERIOR (DVP5505S)



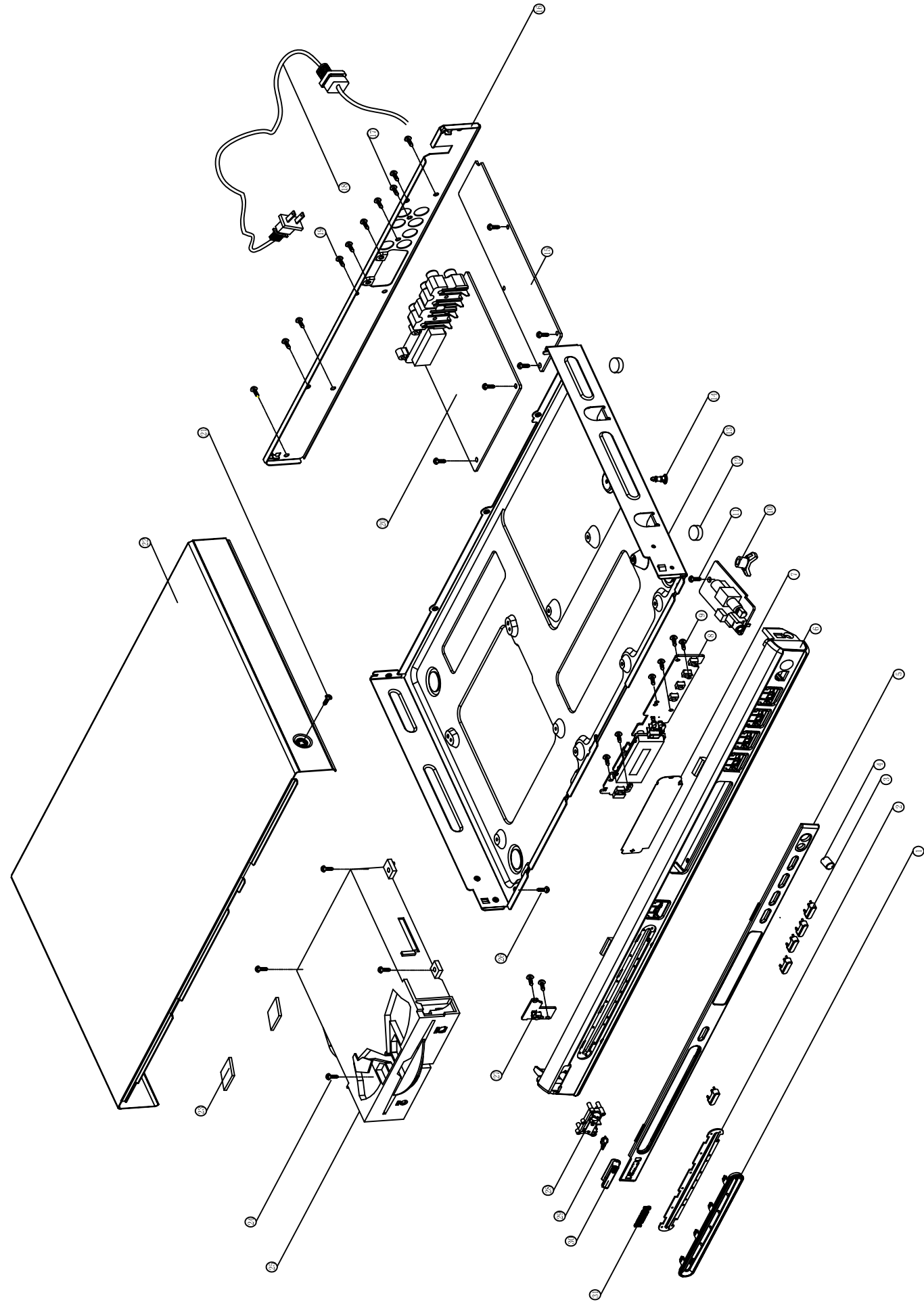
PAINEL MPEG - LAYOUT VISTA INFERIOR (DVP5505S)



PAINEL SCART - LAYOUT VISTA SUPERIOR E INFERIOR



VISTA EXPLODIDA



VISTA EXPLODIDA (DVP5500S & DVP5505S)

